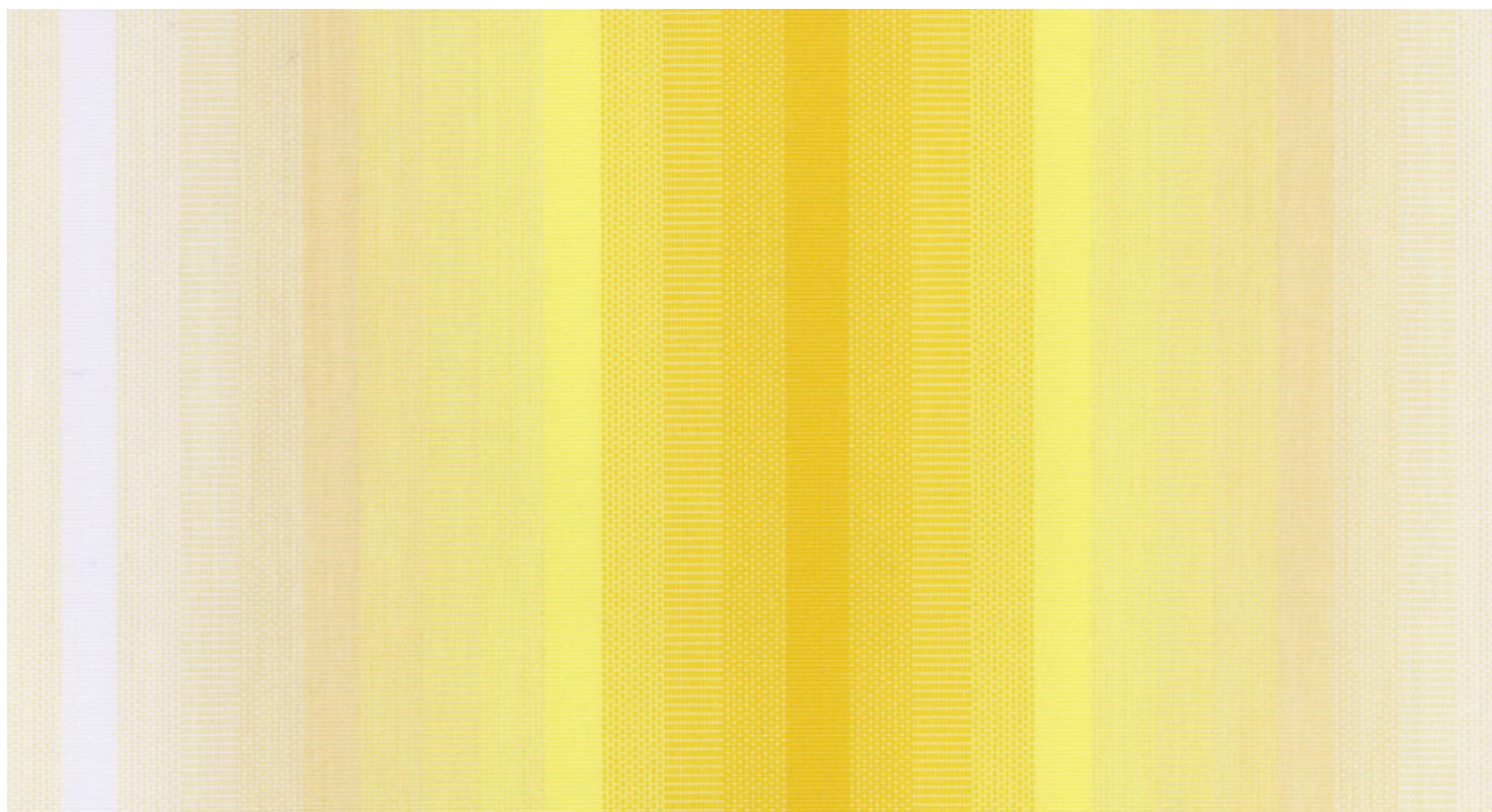


Art. 338201

A specialised dealer in your vicinity is looking forward to give you noncommittal advice on your pre-selection of Sattler awning fabrics!



Details

Collection:	Sattler [Lumera]
Color range:	Yellow
Pattern/Structure:	Multistripes
Design line:	Balance
Width:	120 cm
Repeat width:	24 cm
UV Protection Factor:	60

Sattler [Lumera]



The CBA-fibre – newly developed by Sattler – excels through especially high colour brilliance with exceptionally long durability.

- Greatest color brilliance
- Extremely high water-pressure resistance
- Outstanding self-cleaning effect
- Harmonious high quality appearance
- Officially tested UV protection for your skin



Quality in each fibre.

Our top-quality awning fabrics are made from 100% spun-dyed branded acrylic and guarantee for the best functionality.



Long-lasting pleasure guaranteed.

The special finish of the fabric prevents the permeation of water, humidity and dirt. For utmost comfort that you will enjoy for many years.



Saving energy naturally.

With an ideally positioned Sattler awning, it is possible to reduce the energy consumption of your air-condition by up to 80%.



Fabrics as a role model.

Responsibility is what counts. Certification according to the ISO standards 9001:2008 and 14001:2004 as well as the OEKO-TEX® seal are a must. All our products comply with the REACH requirements.



Skin protection guaranteed.

Sattler sun-protection fabrics are tested according to the UV standard 801, the strictest testing programme worldwide. Your skin protection guaranteed.