



sunprotection
privacy
... and more

DESIGNING · SUNLIGHT

VERTICAL AWNINGS

Creative accents

Individual variants

Comprehensive colour range



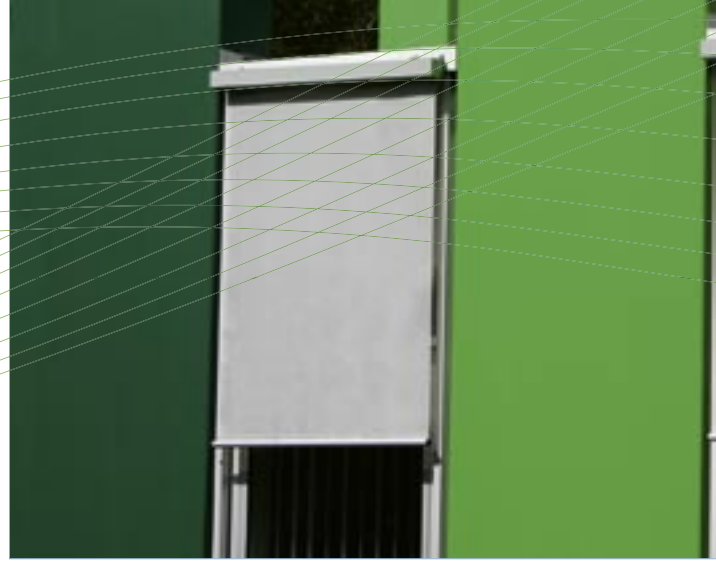


Give your façade a touch of class

Often, it is the first impression that counts. And who would want to be accused of not applying the same high standards when choosing the house's exterior – its clothes – rather than its interior? WO&WO's range of vertical awnings combine technical excellence with a distinct decorative touch, adding the unique quality of design to your awning. Individual variants emphasise the style of your house without compromising the product's primary function – to provide protection against the sun!







Enjoy numerous advantages

It is not just that they give your house an individual design, vertical awnings also bring quality of life to your home. Helping you avoid overheating your living space in the summer, they also create an atmosphere of brightness and transparency in which light and colour burst to life. Vertical awnings are ideal to design your own personal relaxation retreat! Enjoy the spellbinding effect of the sun as it plays with light and shadow.



1. A product for any time of year

Vertical awnings are good to have at any time of the year – in the summer they keep out the heat, in the winter they brighten up your home and sprinkle it with colour. While creating a pleasant indoor temperature, the translucent and air permeable textile blind lets you feel close to nature and the garden.



2. Creative accents – outside and inside

Whether it is an independent façade element or integrated in the reveal – a vertical awning always adds something special to your living area and gives the terrace or balcony a southern flair. It is all up to you whether you wish to integrate vertical awnings into your façade design to achieve a harmonious overall appearance or whether you prefer them as an attractive eye catcher on your façade. Vertical awnings provide excellent shading for living rooms and interiors, but at the same time they do not compromise brightness or transparency.



3. Keeping out curious eyes and moderating light intensity

A vertical awning lets you enjoy an undisturbed private atmosphere. The textile sun blind moderates natural sunlight, but also lets enough daylight into the room. And at the same time, it keeps out curious eyes. A vertical awning lets you enjoy the pleasant atmosphere of a shaded room, but it is equally useful to prevent glare when you fancy watching something in your own “private cinema”.



4. Colour and design diversity

WO&WO vertical awnings let you stress the individual architecture of your home. In this way, the vertical awning turns into an expressive design tool that combines quality, longevity, design and maximum comfort. With WO&WO's fabric and colour variety, it is entirely up to you whether you want to inject colour with your vertical awning or whether you would rather have the awning inconspicuously blend in with the façade to create an overall image of undisturbed harmony.



NOVOLINE

This façade awning is the classic among façade awnings. The many design variants comprise of a wide range of options so that design and appearance can be tailored to the architectural style of your building. The round-cassette version with round guiding rails acts as a visual eye-catcher. The inherent roundness of this awning will give any façade a special touch. By contrast, the version with angular box and guiding rails emphasises the straight lines in the architectural structure and lets the awning fit in unobtrusively with the façade's appearance. Either design variant of this façade awning offers the possibility of guiding the screen blind laterally with guide wires, thus giving this awning an almost filigree appearance.

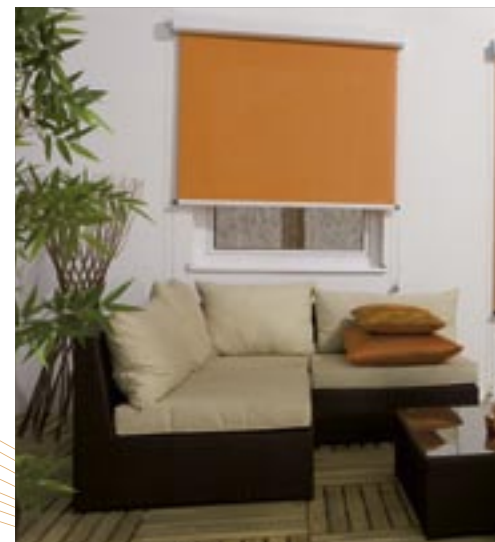


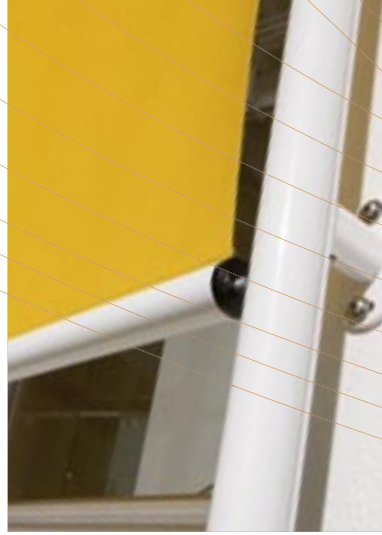
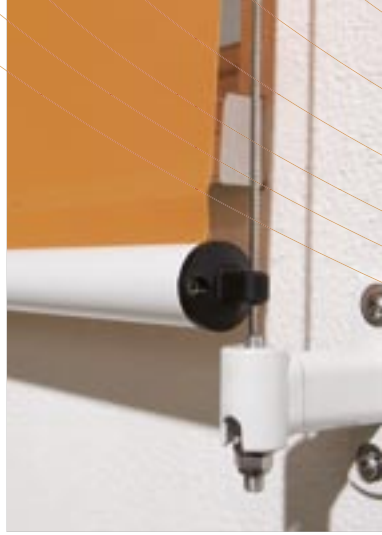
Find your solution!



OPENLINE

Openline is the purist of façade awning variants – it does not have a cassette at all. This product can be used in many ways, both inside and outside. In interior applications (insides), it is used to shade very large glass surfaces. As there is no wind load inside a building, a lateral guide for the blind is not even required. In exterior applications (outsides) it is integrated almost invisibly in façade shaft elements provided on site. Thus it becomes an integrated part of the façade.





MARKISOLETTE

Markisolette is an exceptionally versatile awning. Markisolettes combine the possibility of an entirely harmonious façade design with the individual shading effect of an awning. Markisolettes let you fine-tune the ratio of the parameter pair 'desired shading in the living area' and 'view of the outside'. Because of the robust deployment installation, the window surface will continue to be shaded fully even if the sun is high while the lower area of the Markisolette continues to afford a free view of the outside. Choosing a round or angular cassette determines whether the Markisolette integrates optimally into the façade or whether it acts as an eye catcher and gives your home a southern flair.



VOKA-SCREEN

The window awning with a slight difference. With its box and guiding rail geometry, this window awning can be integrated perfectly in the window reveal. While the design version with the semicircular box integrates softly and gently into the reveal, the version with the angular box permits a straight-line connection of the awning in the relevant door or window reveal. This awning demonstrates its versatility in the combined use with WO&WO roller blinds and venetian slat blinds (Voka-Sky) because the same box can be used for each of the three product variants. Therefore, in terms of box geometry, a consistent façade design is achieved.



More than just a fabric!

Without sun, there is no life. However, because of its ultraviolet radiation, the sun can also have a harmful effect. The blind of a vertical awning protects, shades, designs, decorates and influences the mood by displaying a choice of colours. The fabric is a mood-enhancing element. It influences your personal wellbeing by filtering light, colouring light and therefore giving the room and the surroundings a very particular colour atmosphere. This effect depends very much on the colour, the pattern and the light transmission of the fabric.

Soltis

Soltis is a high-tech fabric with properties that make it exceptionally permeable to air. If you look at it from the outside, this fabric does not let you see anything that is inside. By contrast, the fabric's fine micro pores ensure that the view of the outside from the inside is almost unrestricted. In addition, this fabric offers superior dimensional stability, which is achieved by means of a patented production process. Depending on the type, Soltis fabrics will absorb and reflect between 86% and 97% of the energy contained in the sun's radiation.

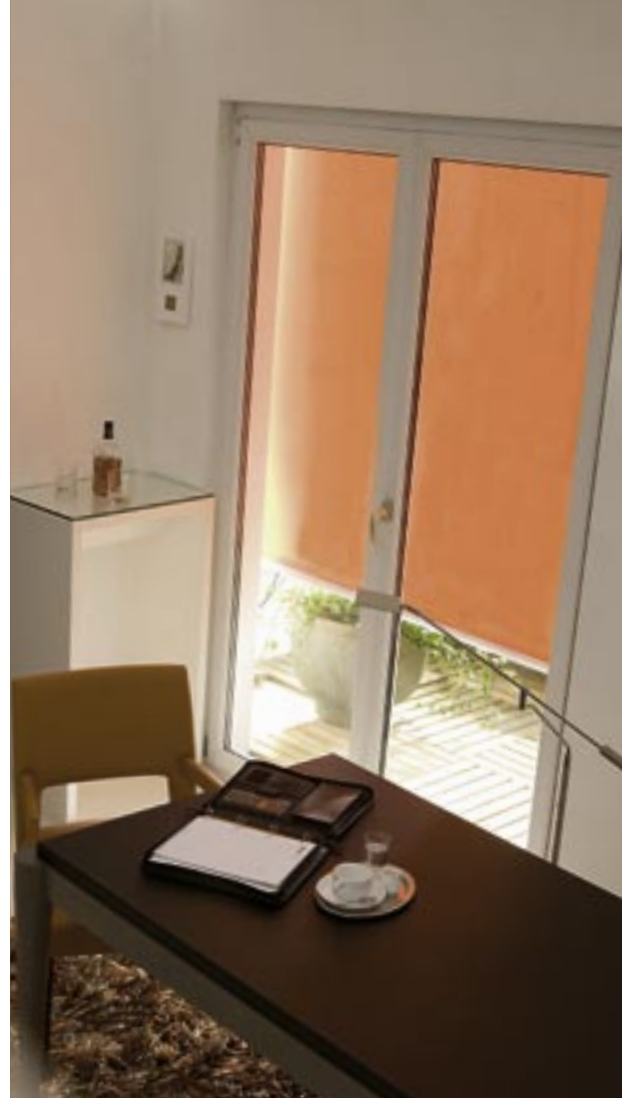
Acryl

With their material properties and their special surface finish, acrylic awning fabrics are an ideal choice to prevent the fabric from getting dirty. Acrylic fabrics display colours vividly – a wide selection is available. As many acrylic fabrics retain a high degree of transparency, they also offer a good view of the outside. Notwithstanding all of these positive qualities, of course the fabric primarily has to provide effective protection against solar radiation – the UV protection factor of these fabrics is between 40 and 80.

Twilight

The quality of Twilight fabrics sets new standards!

Twilight fabrics consist of polyester fibre developed specifically for façade shading. The aluminised fabric structure combines optimal protection against light and solar radiation with low area weight. Twilight fabrics are high-tech odourless fabric products for the sophisticated taste that give the vertical awning a precious and modern appearance.



Inject colour into your life!

Colours are almost uniquely capable of lending character to your house or your living area – a character all of its own that reflects your highly personal taste. With the colour composition of your façade awning, you can choose freely to give your home a personal touch. It does not matter whether you want to use your awning to make a colourful statement by choosing a strong colour or whether you want your awning's colour to blend in with the façade so that it is almost invisible. In either case, the right choice of colour allows you to express your own personal style.

Colour play

When it comes to colour, the choice is all yours – for façade awning frames, you can select from more than 200 RAL colours, while 8 different RAL colours are available for window awnings. Your favourite is bound to be there! Fabrics for blinds are offered with various designs and a great choice of colours, making sure that you will always find a colour composition to suit your taste.

! TIP

With our trained speciality retailer near you, have a look at WO&WO's comprehensive range of fabrics and colours – a world of colours and designs awaits your discovery!

You are looking for a speciality retailer near you? – see

www.woundwo.at



RAL colour cards are available from: RAL Deutsches Institut für Gütesicherung und Kennzeichnung e.V. (www.RAL-Farben.de)



Operation and comfort

Do you dislike the idea of operating your installation by hand with a crank handle, a cord or a belt? Well, you don't need to! Fit a motor to your vertical awning, and you can operate your awning conveniently by pressing a button. Or, if you want to have it even more comfortable, choose a remotely controlled motor for your awning, then all you have to do is press the buttons on your remote control – it really couldn't be easier. And if you want to optimally link comfort with convenience, WO&WO can also supply an automatic control unit for your vertical awnings that allows you to prevent the risk of overheating in your living rooms by integrating a timer and a room thermostat in your system.



! TIP FOR MORE COMFORT

Wind and sun sensor

Whether you are at home or away – a wind and sun sensor mounted on the façade measures the current wind speed and the intensity of the sun. If the wind is too strong, the blind is automatically retracted, if there is sunshine, the blind is automatically deployed.





! TIP FOR UNTARNISHED JOY

INSECT SCREEN

If you wish to enjoy long summer nights and the last warm autumn days without a worry in the world, think of fitting your window awning with an integrated insect screen. Even if the windows and doors are open – the insect screen ensures that uninvited pests stay outside.



Design and function

Whether they form an extensive system for a building or a shading element for private areas – vertical awnings always have a highly decorative character. In addition to an expressive design, however, functionality is also important. Apart from the original function of providing protection against the sun, vertical awnings also keep out curious eyes and moderate the light intensity. The prevention of glare and unwanted reflections on monitors makes vertical awnings an attractive multifunctional element, for instance for computer workplaces, that provides much more than just “protection against the sun”.



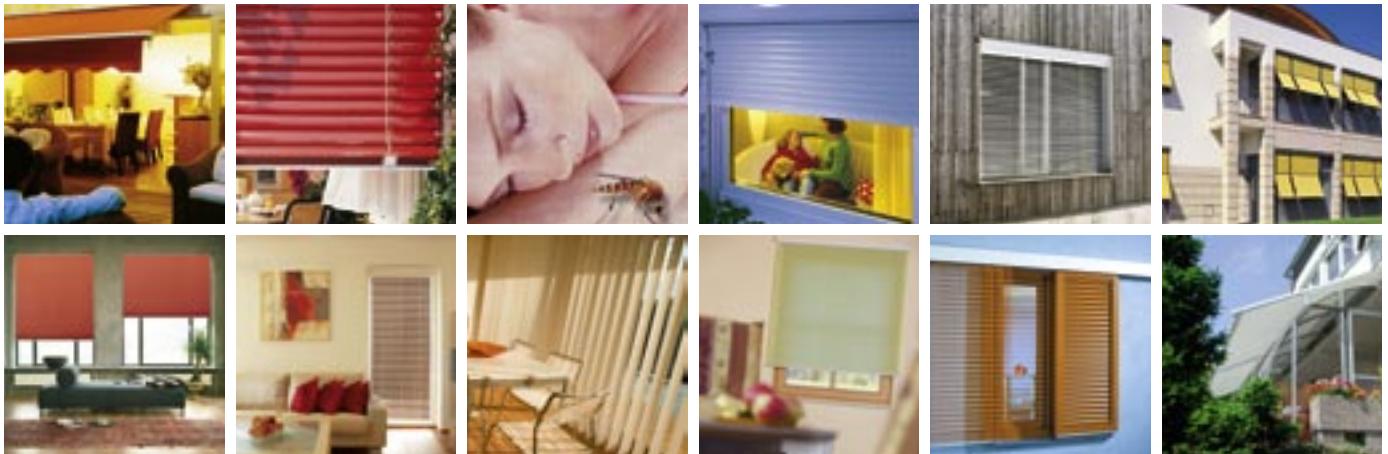
sunprotection
privacy
... and more

DESIGNING · SUNLIGHT

MEMBER OF THE **Haas**
GROUP

WO&WO lets the sun shine for you

Our passion is to let precious sunlight into your home in a controlled manner so that you really feel the full benefit of "your" sun. WO&WO's tailored sun blind products transform your home into your personal sunny paradise. The product range of WO&WO includes all articles for modern internal and external sun blinds and visual screens such as awnings, façade awnings, winter garden awnings, roller shutters, venetian blinds, window shades, vertical blinds and insect screens.



Internal sun blinds

The amount of light that enters a building can be controlled and optimised in many different ways. How this is achieved in a particular situation is partly a question of personal taste, but it also depends on the individual requirements: Do you want a transparent element or do you want it to darken the room? Should it consist of metal or fabric? There are no limits to your imagination!

External sun blinds

An awning creates additional living space. It also decorates the house. Modern architecture increasingly relies on external systems for light control, such as venetian blinds, that provide excellent protection against the weather and act as a visual screen at the same time.

www.woundwo.at

Your WO&WO retailer: